

ORGANISATIONAL STRUCTURE

The Ministry of Steel is under the independent charge of the Minister of State for Steel. The Ministry is responsible for the planning and development of Iron & Steel Industry, development of essential inputs such as iron ore, limestone, dolomite, manganese ore, chromite, ferro alloys, sponge iron etc. and other related functions. There are 10 Public Sector Undertakings under the administrative control of the Ministry of Steel. The details are given in **Annexure-I**.

The Ministry has a Secretary, 3 Joint Secretaries, one Economic Adviser of the rank of Joint Secretary, 4 Directors, 4 Deputy Secretaries (including one DS in-situ), 13 Under Secretaries (including 8 in-situ USs), one Deputy Director (Official Language) and other supporting level officers and staff. The Ministry also has a Financial Adviser in the rank of Additional Secretary and a Chief Controller of Accounts. A Technical Wing consisting of an Industrial Adviser, one Additional Industrial Adviser, 2 Joint Industrial Advisers, 3 Deputy Industrial Advisers and 3 Assistant Industrial Advisers provide support and give advice in respect of technical matters.

The Organisational Chart of the Ministry is at **Annexure-II**. The details of classification/category of personnel in position are given in **Annexure-III**.

The Ministry has an attached office viz. Office of the Development Commissioner for Iron & Steel (DCI&S) at Kolkata. The DCI&S is an officer of the rank of Joint Secretary and is assisted by a Joint Development Commissioner. The Office of DCI&S has 4 Regional Offices, one each at Delhi, Mumbai, Kolkata and Chennai headed by Regional Development Commissioners for Iron and Steel. Based on the recommendations of an in-house committee constituted by the Ministry of Steel to review the staff strength of the establishment of the Development Commissioner (DCI&S), it has been decided to retain 111 posts (as against 268 sanctioned posts) for the headquarters of DCI&S and its regional offices at Mumbai, Chennai and New Delhi.

Annexure-I

List of Public Sector Undertakings Under the Administrative Control of Ministry of Steel

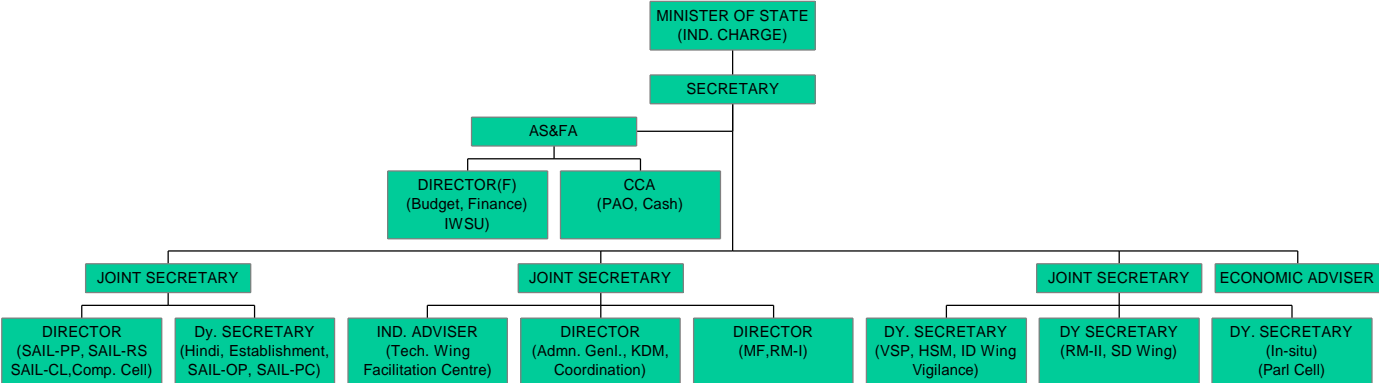
1. Steel Authority of India Limited,
Ispat Bhavan, Lodhi Road,
New Delhi-110 003.
 - 1.1 Indian Iron & Steel Company Limited,
Burnpur, District Burdwan,
West Bengal-713 325.
 - 1.2 IISCO Ujjain Pipe and Foundry Limited,
50, Chowrangee Road, Kolkata-700 071.
(Subsidiary to IISCO, under liquidation)
 - 1.3 Visveswaraya Iron & Steel Limited,
Bhadravati, Karnataka-577 301.
 - 1.4 Maharashtra Elektros melt Limited,
Mul Road, Chandrapur-442 401,
Maharashtra.
(Subsidiary of SAIL)
2. Rashtriya Ispat Nigam Limited,
Administrative Building,
Visakhapatnam-530 031,
Andhra Pradesh.
3. MECON Limited, MECON Building,
Ranchi-834 002, Jharkhand.
4. Kudremukh Iron Ore Company Limited,
II Block, Koramangala, Bangalore-560 034,
Karnataka.
5. National Mineral Development Corporation Limited,
Khanij Bhavan, 10-3-311/A, Castle Hills,
Hyderabad-500 028, Andhra Pradesh.
 - 5.1 J&K Mineral Development Corporation,
19/9, Trikuta Nagar, Jammu-180 012,
Jammu & Kashmir.
(Subsidiary of NMDC)

6. Hindustan Steelworks Construction Limited,
No.1, Shakespeare Sarani, 8th Floor,
Kolkata-700 071, West Bengal.
7. Bharat Refractories Limited,
Sector IV, Central Avenue, Bokaro Steel City,
Bokaro-827 004, Jharkhand.
8. Sponge Iron India Limited,
Khanij Bhavan, 10-3-311/A, Castle Hills,
Hyderabad-500 028, Andhra Pradesh.
9. MSTC Limited,
225-F, Achraya Jagadish Bose Road, Kolkata-700 020, West Bengal.
- 9.1 Ferro Scrap Nigam Limited,
FSNL Bhavan, Post Bag No.37, Equipment Chowk,
Central Avenue, Bhilai-490 001, Madhya Pradesh.
(Subsidiary of MSTC Ltd.)
10. Manganese Ore India Limited,
3 Mount Road Extension, Post Bag No.34, Nagpur-440 001, Maharashtra.

GOVERNMENT MANAGED COMPANY

1. Bird Group of Companies

Organisational Chart of Ministry of Steel



Annexure-III

**Statement Showing the Number of SC/ST/OBC/Ex-Servicemen
Men & Women as on 30.9.2001 in respect of Ministry of Steel**

Classification of Post	No. of Employees in position	Men	Women	SC	ST	OBC	PH	Ex-Servicemen
A	39	33	6	6	1	-	-	-
B	85	58	27	13	5	2	-	-
C	80	62	18	15	5	3	2	-
D	71	68	3	25	8	3	1	-
Total	275	221	54	59	19	8	3	-

